



Health & Safety

Dr. Naif Alharbi





Aim of workshop



- Why is Lab Safety Important?
- What is COSHH
- What is PPE
- Maintenance of PPE
- Lab safety rules
- college resources and information



جامعة أم القرى

Why is Lab Safety Important?

Lab safety rules and symbols are needed so that students do not injure themselves or their classmates.





What is COSHH?



COSHH stands for:

Control Of Substances Hazardous to Health

Substances defined as hazardous to health. These include substances labelled as dangerous, i.e. toxic, harmful, irritant, corrosive or flammable.

The most common substances found in the hospitality industry that have warning labels/ symbols are the cleaning agents and maintenance products.

What the warning symbols stand for!!



Toxic - Poisoning



Corrosive - Destroying or burning



Irritant - Causing a reaction such as inflammation or swelling



Solid Liquid or Gas that poses a risk to human health or the environment.



Flammable - Easily ignited and capable of burning rapidly



جامعة أم القرى



BSL1



BSL2, BSL3

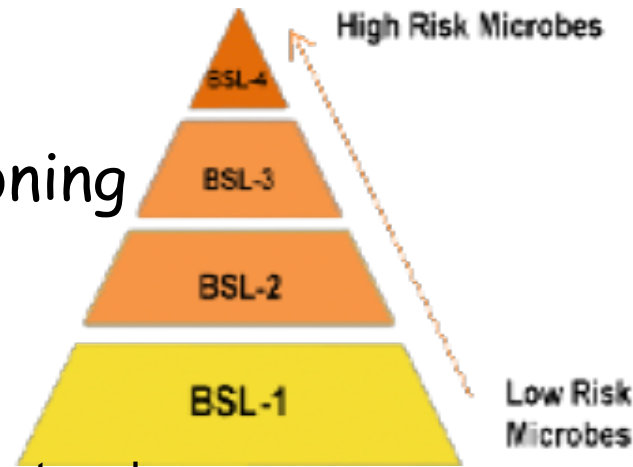


BSL4

What the warning symbols stand for!!



Toxic - Poisoning



1. BSL1= Minimal requirements
2. BSL2 = biological Safety Cabinet and personal protective equipment are needed.
3. BSL3 = biological Safety Cabinet and personal protective equipment are needed.
4. BSL4 = Biological Safety Cabinet + Full-body air-supplied + positive pressure personnel suit.



What are Safety Data Sheets?



جامعة أم القرى

- Safety data sheets provide information on chemical products that help users of those chemicals to make a risk assessment.
- They describe the hazards the chemical presents, and give information on handling, storage and emergency measures in case of accident
- Safety data sheet information may lead to guidance appropriate for your task.

Please see Health & Safety folder for copies of all safety Data sheets

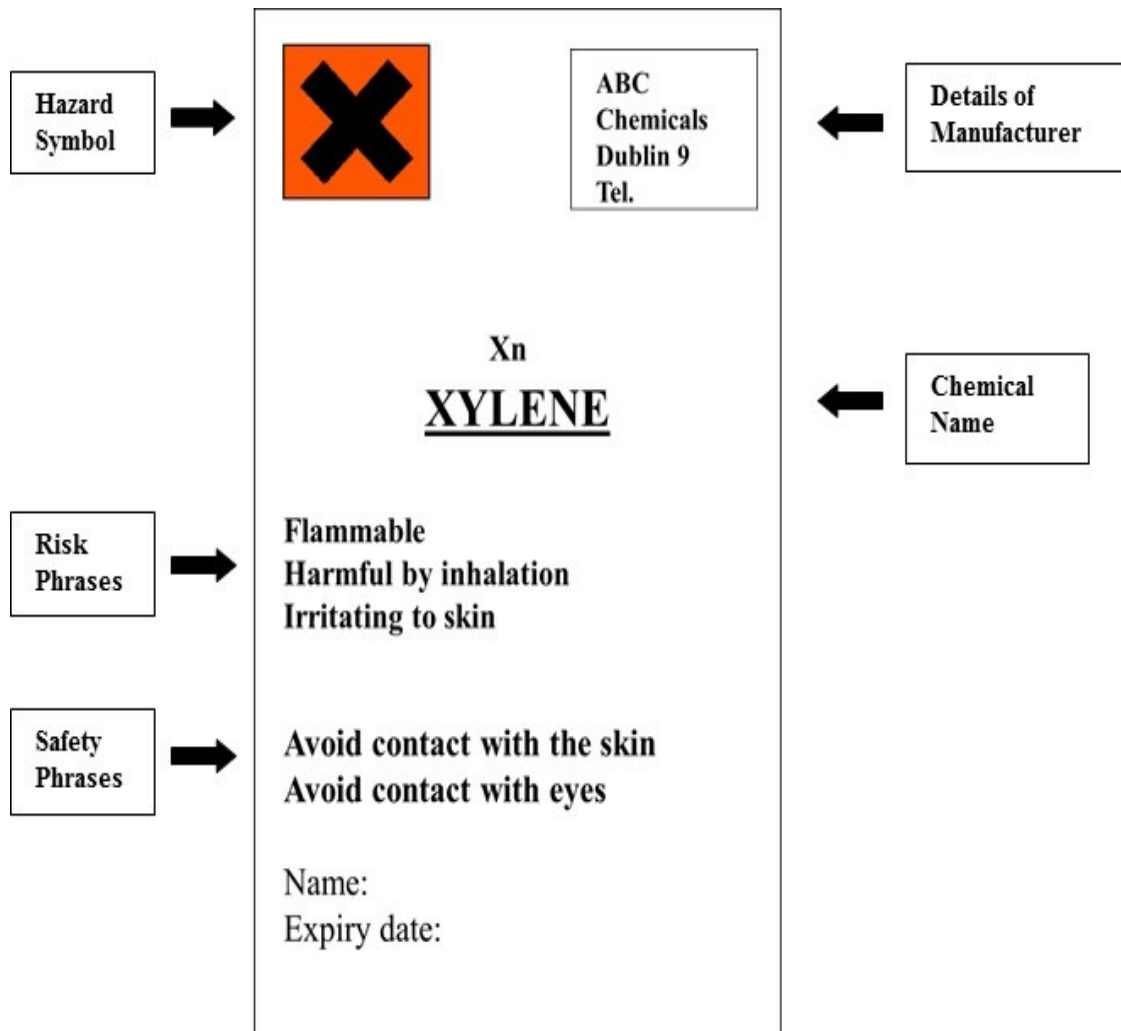


What are Safety Data Sheets?



Label information

- Name of Student
- Name of Substance
- Name of constituents and concentrations Date
- Expiry date





Handling and Storage?



جامعة أم القرى













+ Substances which can be stored together

○ Subject to special precautions.

These substances can be stored together, for example, if they are segregated by using spill trays. Otherwise they should be stored separately in safety cabinets.

- Substances that cannot be stored together



	Flammable 	Explosive 	Toxic 	Radioactive 	Oxidizer 	Harmful 
Flammable 	+	-	-	-	-	+
Explosive 	-	+	-	-	-	-
Toxic 	-	-	+	-	-	+
Radioactive 	-	-	-	+	-	-
Oxidizer 	-	-	-	-	+	○
Harmful 	+	-	+	-	○	+



What is PPE?



Personal Protective Equipment

- (PPE) refers to protective clothing, helmets, goggles, or other garment designed to protect the wearer's body from injury by blunt impacts, electrical hazards, heat, chemicals, and infection, for job-related occupational safety and health purposes.



Maintenance of PPE



- Keep in a clean condition.
- In accordance with the manufacturers requirements.
- Visually inspected regularly for signs of damage or deterioration.
- Users to report any defects.



جامعة أم القرى

REMEMBER!!

- Each student will be provided with appropriate training and equipment if you have to use chemicals & PPE:

This will include:

- Explaining the dangers of the task
- The precautions to be taken
- The correct wearing of the PPE
- Supervision of task

IF YOU HAVE NOT BEEN TRAINED - DO NOT CARRY OUT THE TASK!!



Lab Safety Rules !!

Wear Personal Protective Equipment



Protective glasses



Face shield

Lab coat



Apron

Gloves



Gauntlet



Shoe covers

Lab Safety Rules !!



Wear Personal Protective Equipment

- o **Gloves** are essential.
- o **Lab coats** are essential.
- o Safety glasses (**goggles**)
may be required to avoid
splashes.



Lab Safety Rules !!



Wear Personal Protective Equipment

- o should not wear sandals



Lab Safety Rules !!



Wear Personal Protective Equipment

- Do NOT Wear:
 - Jewelry
 - Loose or Baggy clothing



Lab Safety Rules !!

Wear Personal Protective Equipment

- o Avoid **touching** objects (e.g., pencils, cell phones, door handles) while wearing gloves.



Lab Safety Rules !!



Wear Personal Protective Equipment

o **long hair** must be tied back or covered to minimize fire hazard or contamination of experiments.





جامعة أم القرى

Lab Safety Rules !!

Wear Personal Protective Equipment

- o Do not eat food or drink water in the lab



Lab Safety Rules !!

Wear Personal Protective Equipment

- electrical safety:
 - unplug electrical equipment after use.
 - keep all electrical cords and wires away from water



Lab Safety Rules !!



Wear Personal Protective Equipment

○ If you **spill** something, clean it up and tell the Technician over the equipment (they must check if you cleaned up correctly)



Lab Safety Rules !!



Wear Personal Protective Equipment

O Do not engage in practical **jokes** or horseplay in the lab.



Lab Safety Rules !!



Wear Personal Protective Equipment

O Report all accidents, no matter how minor, to your supervisor!!



Lab Safety Rules !!



Wear Personal Protective Equipment

o **organize** & Dispose of waste products according to instructions.



Lab Safety Rules !!



Wear Personal Protective Equipment

o Wash hands after every lab.



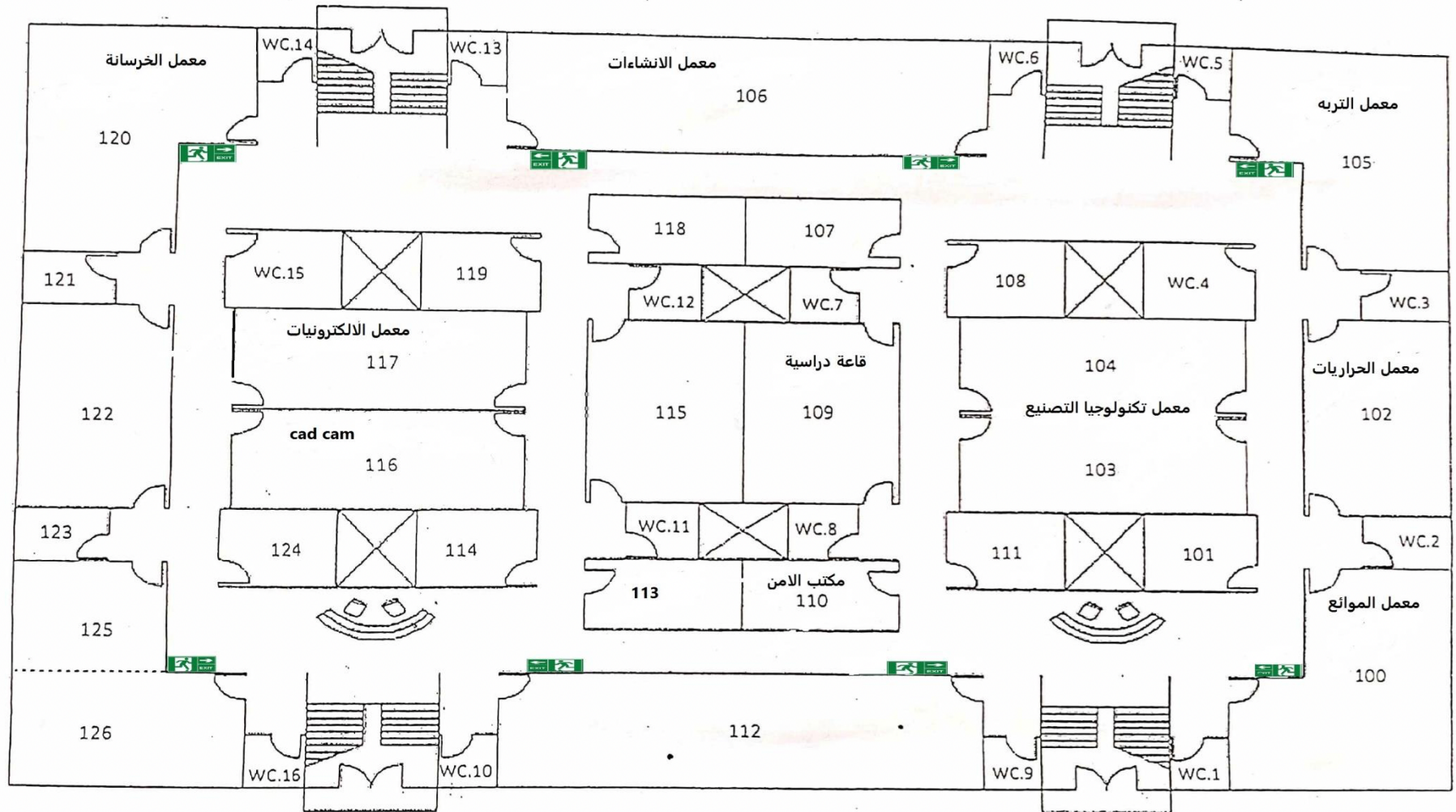


جامعة أم القرى

Evacuation Procedures



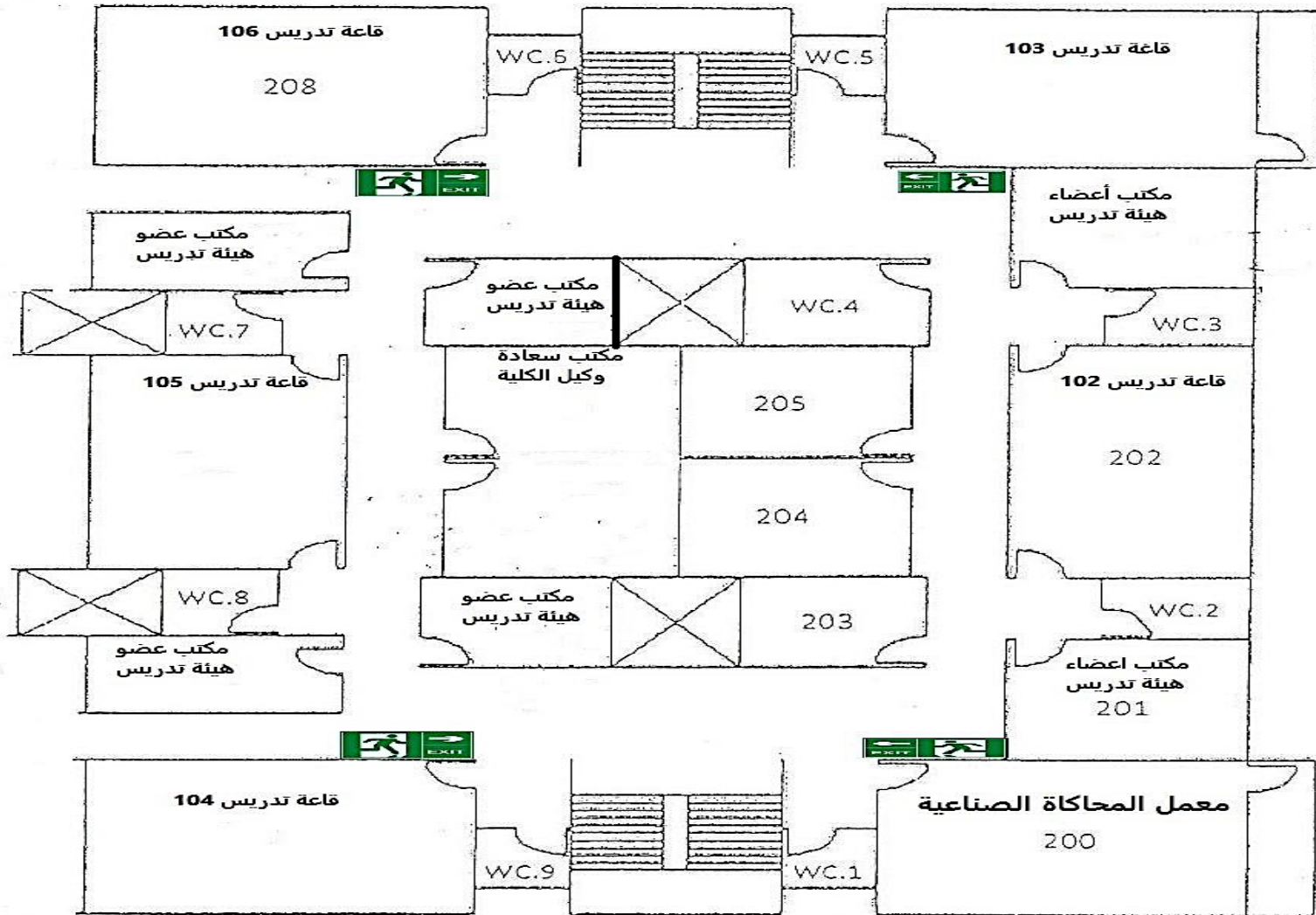
خطة إخلاء الدور الأول





جامعة أم القرى

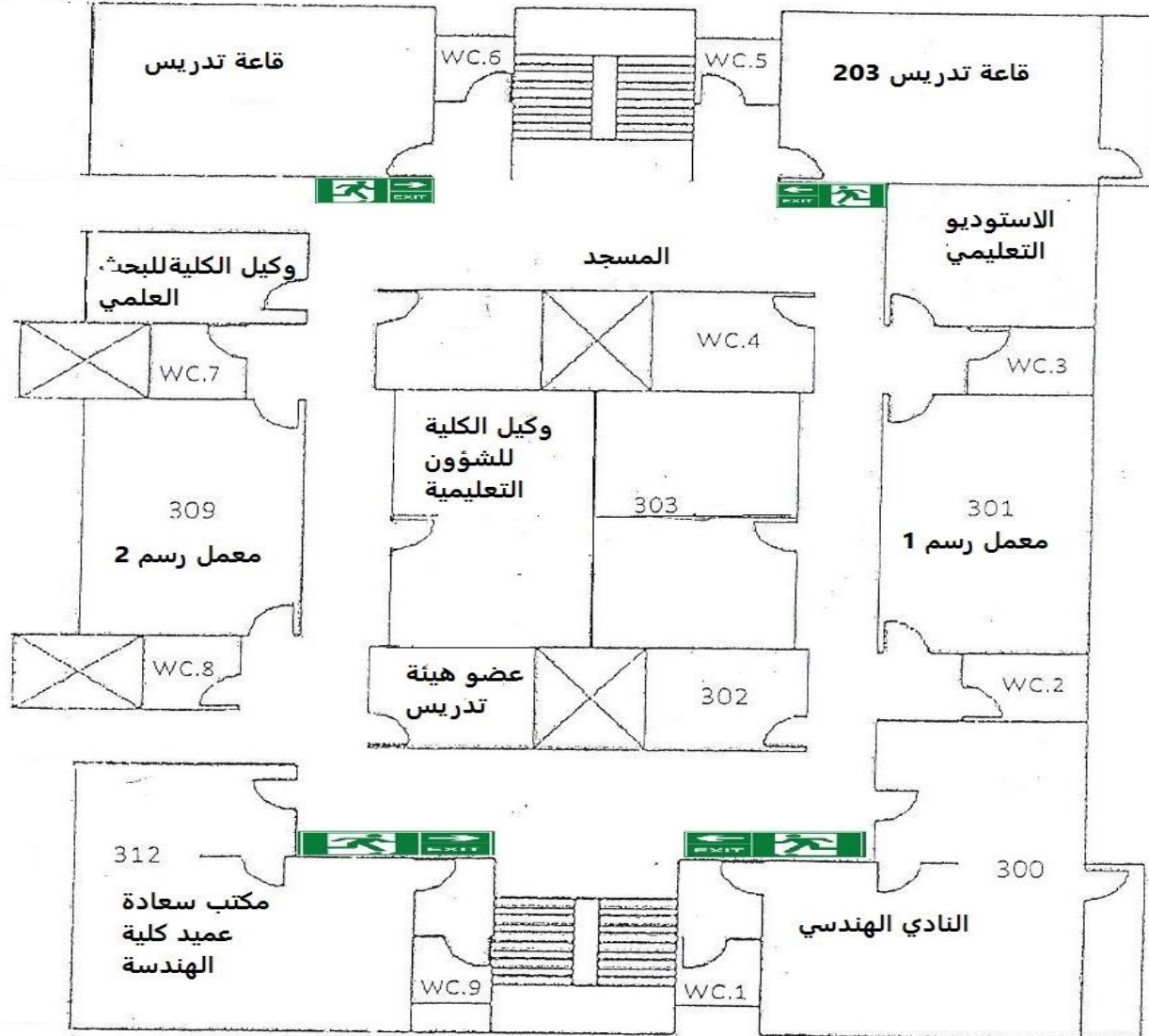
خطة إخلاء الدور الثاني





جامعة أم القرى

خطة إخلاء الدور الثالث



نقطة التجمع خارج الكلية



جَامِعَةُ أُمِّ الْقُرَى

